



myaccountant

newsletter

EXCITING REBIRTH FOR LONG ESTABLISHED BUSINESSES

Campbell Tyson Cooper White can simultaneously lay claim to being Franklin's most recently formed company while having a heritage that stretches back to the early days of Pukekohe.



Campbell Tyson Cooper White has been formed through the merger of Campbell-Tyson (founded in 1922) and Cooper White (1938).

The motivation behind our coming together is to give our clients, and the Franklin region, a personal financial and business advisory firm capable of delivering the range of expertise and services needed to succeed in the modern world.

To ensure we have the expertise to deliver, we need to supplement broad accountancy skills with in-depth specialisation in areas such as tax advice, trust formation and administration, financial planning, business development and information technology.

All staff of the new firm are now located at 17 Hall Street, Pukekohe, and new signage is in the process of being erected.

In this newsletter we will introduce you to the company's directors and consultants. In coming editions we will introduce you to group team managers and other staff.

The team at Campbell Tyson Cooper White is thoroughly looking forward to working with you in the future and sharing our combined expertise to deliver the best results.

LEFT TO RIGHT:
PETER RAYNES, NIGEL HICKS.

CONTENTS:

EXCITING REBIRTH

STEELY DETERMINATION

MEET THE TEAM

RUN THAT BY ME AGAIN



campbell.tyson.cooper.white

STEELY DETERMINATION TO MAKE WORDS REALITY

For those involved in the formation of Campbell Tyson Cooper White, now is an exciting time. It is the moment when all the negotiations, planning and hard work have come together to form a new entity.

We start the journey with high expectations and convictions that we can deliver to our clients a better, more in-depth and relevant service.

The ultimate measure will be your judgement – your view of how we measure up.

Our immediate priority is to ensure that our relationship with you remains seamless, and that we continue to deliver to your expectations on a day-to-day basis. As things settle down, we would anticipate starting to progressively deliver against our high expectations.

One of the ways we will measure whether we are living up to those expectations will be to benchmark ourselves against this country's best metropolitan accountancy firms.

In doing so, not only will we deliver to our clients, we will also create a business that offers employment opportunities to this region's talented accountants. We want those that live and have grown up in our community to believe that there are rewarding career opportunities for them on their doorstep.

A commitment we are also making publicly from the outset is to play a role in community leadership.

Community leadership is part of the heritage of our two founding firms, and one we intend to instill into our new culture.

Franklin is poised to play a significant role in the future economic development of the Auckland region. All around us we see signs of change and growth.

Our new firm is committed to being involved in shaping this change so that we assist in preserving what makes us unique, while giving direction to what will make our community an even more prosperous and desirable place to live and work.

For now, those ambitions remain words. However, I can assure you that we have the same steely determination to make them reality as the founders of the two firms did when they established their businesses in Pukekohe so many years ago.

NIGEL HICKS
MANAGING DIRECTOR



“THE ULTIMATE MEASURE WILL BE YOUR JUDGEMENT – YOUR VIEW OF HOW WE MEASURE UP.”

MEET THE TEAM

NIGEL HICKS Director

Qualifications: CA

Work History: Joined Campbell-Tyson in 1975 as a Trainee, progressing through management to become a Partner in 1990.

Committees involved with: *Present* - Enterprise Franklin Development Trust (Deputy Chair, Chair Audit & Compliance Committee), ACG Strathallan Education Trust (Board Chair) *Past* - Rotary Club of Pukekohe and Rotoract Club (Past President), Pukekohe East Primary School Board of Trustees (Past Chair)

Interests: Skiing, running, tramping and watching sport.

ROBERT (BOB) KRILETICH Consultant

Qualifications: CA

Work History: Worked for the IRD from 1957 until 1961. Joined Cooper White in 1961 and became a Partner in 1964.

Committees involved with: *Present* - Clark's Beach Golf Club (Board Chair) *Past* - Counties Racing Club (Life Member and Past President)

Interests: Golf, fishing and rugby league.

GLEN BEAL Director

Qualifications: BCom, CA

Work History: Spent five years working for a Chartered Accountancy firm in Papakura before joining Campbell-Tyson in 1988. Became a Partner in 1999.

Committees involved with: *Present* - Pukekohe Business Association (Treasurer) *Past* - Business Franklin (Past Treasurer), Selector for Eventing NZ (Retired after four years in 2004), High Performance Committee, Eventing NZ (Past Chair)

Interests: Equestrian, family and squash.

PAT HANNA Consultant

Qualifications: CA

Work History: Spent six years working for the IRD in Auckland and Wellington and five years as a Senior Auditor for Coopers & Lybrand (PriceWaterhouseCoopers) before joining Cooper White in 1969.

Committees involved with: *Past* - Franklin Trotting Club (Executive Member, 20 years), New Zealand Sires Stakes Board, Christchurch (Executive Member)

Interests: Golf and travel.

NEIL GOLLAN Director

Qualifications: CA

Work History: Neil's broad accounting experience includes two years working as a Commercial Accountant, three years auditing with KPMG and four years with Ernst & Young, both in New Zealand and Fiji, before joining Campbell-Tyson in 1979. He was made a Partner in January 1982.

Committees involved with: *Past* - School Boards (Pukekohe Primary and Pukekohe High Schools), Franklin Arts and Cultural Trust, Franklin Squash Club

Interests: Boating, diving and fishing.

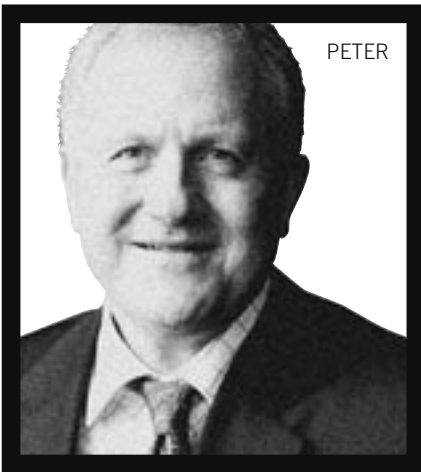
GENE HERDER Consultant

Qualifications: BBus, CA

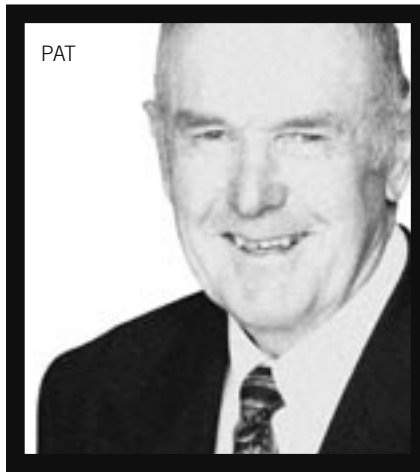
Work History: Prior to joining Cooper White in April 2000, Gene spent nine years working for two Chartered Accountancy firms in Hamilton. He was made a Partner in 2002 and is now working as a Consultant.

Committees involved with: *Past* - Melville United AFC 1999 (National League Soccer)

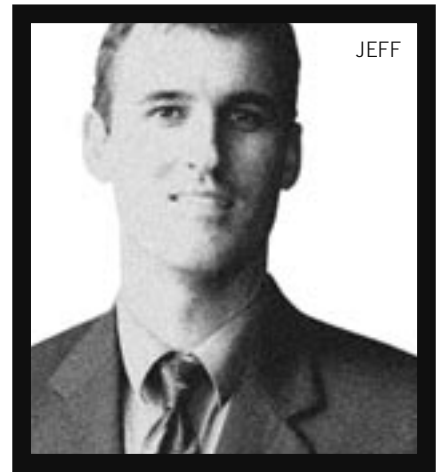
Interests: Family, soccer, IT and bloodstock.



PETER



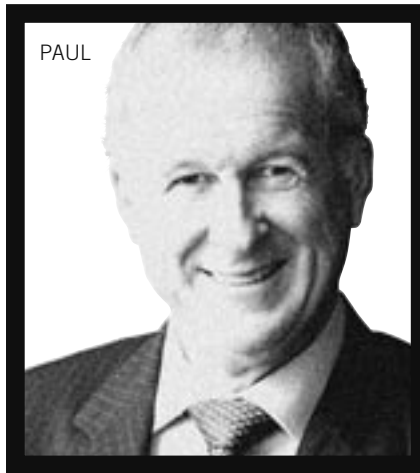
PAT



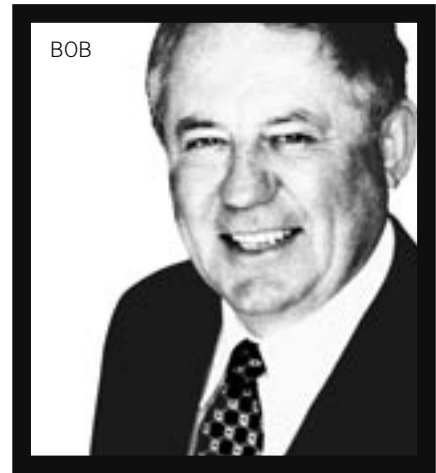
JEFF



GLEN



PAUL



BOB

PETER RAYNES Director

Qualifications: CA

Work History: Peter became a Partner of Cooper White & Associates 26 years ago.

Committees involved with: *Present* - Franklin Club Inc (Life Member) *Past* - Counties Manukau Rugby Football Union (Past Director), Franklin Club Inc (Past Treasurer, Past Chair Management & Finance Committee)

Interests: Harness racing and galloping.

PAUL MUIR Director

Qualifications: BCOM, FCA, JP

Work History: Joined Campbell-Tyson in 1975, became a Partner in 1976.

Committees involved with: *Present* - Counties Power Limited (Director), Rotary Club of Pukekohe (President)

Interests: Sport, travel, current events and investment planning.

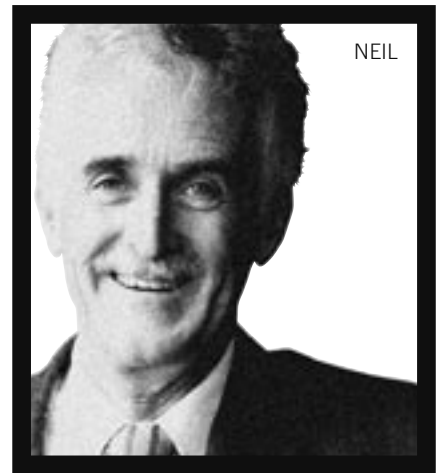
JEFF ROWSELL Director

Qualifications: CA, NDA, NCB

Work History: Prior to joining Campbell-Tyson in 2001, Jeff spent two years working as a Commercial Accountant - three years at Deloitte and six years with Hart Saunders.



GENE



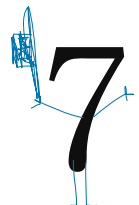
NEIL

He was made a Partner in 2003.

Committees involved with: *Present* - Counties Tennis Association (Chair), Member of Business Network International, Pokeno Tennis Club (President)

Interests: Hunting, fishing, tennis and rugby.

You're not just a number to us.



To find out call 09 238 9219



**FRIENDLY
FACES:
AVALON
AND JUDY**

On Reception

We would like to take this opportunity to introduce you to our two friendly faces on reception – Judy Skudder and Avalon Syverston.

Recently some callers may have been experiencing trouble getting through to us - we have since had a new phone system installed which will put an end to any more unnecessary delays.



RUN THAT BY ME AGAIN...

Information collection and minimum wage rates

If you employ people on the minimum wage, as from March 26 you should have given them a pay rise. The new minimum wage rates from that date are:

- For employees 18 years and over \$10.25 an hour.
- For employees 16 to 17 years of age \$8.20 an hour.

If you provide your employees with board and lodging, you are entitled to deduct 15% from the minimum wage for board and an additional 5% for lodgings.

If you employ people, you have a responsibility to collect and record specific information. This information covers:

- Personal details: name, age (if under 20) and postal address.
- The work undertaken.
- The agreement: whether the person is working under a collective or individual agreement. If collective, the title of that agreement, its expiry date and employee classification.
- Payment: whether payment is by the hour, the hours and days of employment in each pay period and the wages paid each day.
- Leave: details of leave taken covering employment relations leave, annual leave, statutory holidays worked and days provided in lieu of public holidays worked.
- Deductions: details of any deductions made, including PAYE and agreed superannuation payments.

Working for families

The 'in work' element of the Working for Families package came into force on April 1, replacing the child tax credit for eligible families.

The level of income at which this applies has increased. For example, a family with three children can earn up to \$93,760 and qualify for payment. If children are older it is possible to earn even more.

To qualify, a person in a two parent family must be in normal paid employment or self employed for 30 hours a week (20 if a solo parent).

If you have children and are in employment it is to your advantage to check your eligibility.

Revisit your company car arrangements

New regulations around cars, whether leased or purchased, came into force on April 1, making it an appropriate time to review your current arrangements.

A major change that will affect all business vehicles is the way FBT is calculated. It moves from 24% of cost price to either 20% of cost price or 36% tax net book value.

We are in a position to advise you as to which of the two methods is advisable for you to adopt.

Flip leases

If you currently operate a flip-flop lease (or flip for short), from April 1 you will be paying FBT. Flip leases involve leasing your personal vehicle to your company or trust.

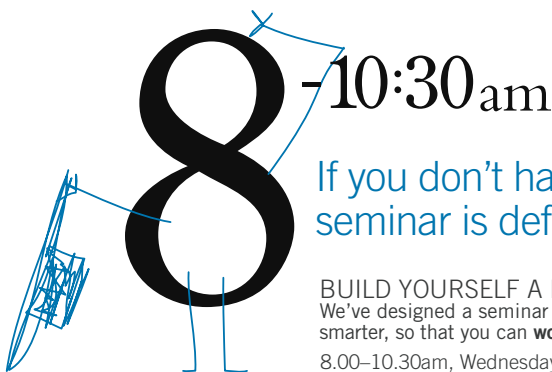
The Government initiative is seeking to place flip leases on the same footing as other car leases by making them less attractive as a financing option.

Some general advice we can offer is:

- If you intend to own a vehicle for four or more years the 20% of cost method of calculating FBT is likely to be the better option.
- Suffering FBT but ensuring all running costs are fully deductible for income tax and GST purposes is likely to be the preferred course of action.

However, such are the variables covering the cost of the vehicle and mileage travelled that if you have a flip lease, our strong advice is that you contact your normal Campbell Tyson Cooper White advisor so we can make recommendations specific to your situation.

“IF YOU EMPLOY PEOPLE ON THE MINIMUM WAGE, AS FROM MARCH 26 YOU SHOULD HAVE GIVEN THEM A PAY RISE.”



If you don't have time to attend, this seminar is definitely meant for you!

BUILD YOURSELF A BETTER BUSINESS:
We've designed a seminar to help you find out how to get working smarter, so that you can **work less** while taking home **more money**.
8.00-10.30am, Wednesday 2 August 2006
Find out more by calling Philippa O'Mara on 09 238 9219

FEEL FREE TO CONTACT US

17 Hall Street
PO Box 324
Pukekohe
New Zealand
T +64 9 238 9219
F +64 9 238 6826
E team@ctcw.co.nz
W www.ctcw.co.nz